

Member Counties and Municipalities

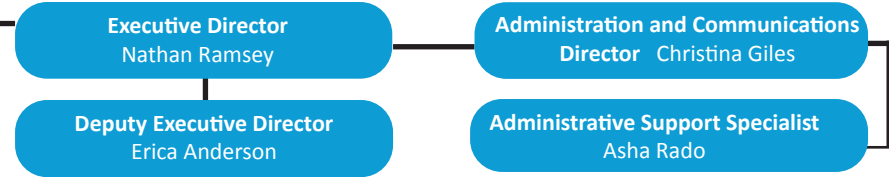
<b>Buncombe</b> Asheville Biltmore Forest Black Mountain Montreat Weaverville Woodfin	<b>Henderson</b> Flat Rock Fletcher Hendersonville Laurel Park Mills River	<b>Madison</b> Hot Springs Mars Hill Marshall <b>Transylvania</b> Brevard Rosman
---	---	--

Board of  
Delegates

Executive Committee

**Chair** - Maureen Copelof - City of Brevard  
**Vice Chair** - Matthew Wechtel - Madison County  
**Secretary** - Jason Chappell - Transylvania County  
**Treasurer** - Terri Wells - Buncombe County  
**Past Chair** - Patrick Fitzsimmons - Town of Weaverville  
**County Delegate** - William Lapsley - Henderson County  
**Municipal Delegate** - Barbara Volk - City of Hendersonville  
**At Large Delegate** - Burton Hodges, Transylvania Alliance  
**Aging Programs Delegate** - Sherrye Perry - Aging Advisory

Administration



**Strategic Initiatives Director**  
Vicki Jennings

**The Remembrance Project Program Manager**  
Phyllis Utley



**Non-Emergency Medicaid Transportation (NEMT)**

**NEMT Manager**  
Glenda Brown

**NEMT Specialist**  
Tanya Carver

**NEMT Specialist**  
LeChelle Fore

**NEMT Specialist**  
Diana Boone

**Mountain Mobility**

**MM Transportation Specialist**  
Charlie Lee

**MM Transportation Specialist**  
Buffy Smith

**MM Transportation Specialist**  
Samantha Case



Board of Directors

**President** - Barbara Volk - Hendersonville  
**Vice President** - Larry Harris  
**Secretary** - Maureen Copelof - Brevard  
**Treasurer** - Patrick Fitzsimmons - Weaverville  
**Director** - Norris Gentry  
**Director** - Preston Blakely - Fletcher  
**Ex Officio** - Nathan Ramsey - LOSRC  
**Community Member** - Mike Hawkins  
**Community Member** - Kathey Avery  
**Community Member** - Albert Gooch



**Peer Support Programs Director**  
Brandon Manson

**INspire Project Liaison**  
Dillon Moss

**INspire Peer Support Specialist**  
Amanda Von Litolff

**INspire Peer Support Specialist**  
Melissa Berretta

**INspire Peer Support Specialist**  
Antony Sluder

**INspire Peer Support Specialist, Cherokee**  
Lee Gibson

**INspire Peer Support Specialist, Cherokee**  
VACANT

**GO PLACES Project Director**  
Gene Ettison

**GO PLACES Project Coordinator**  
Lindsey Hensley

**Economic & Community Development Director**  
Erica Anderson

**Planning Director**  
Mary Roderick

**Planner II, Regional**  
Kaitland Finkle

**Planner II, Regional**  
Paul Moon

**Planner II, Housing**  
Jacob Compher

**Planner II, Water Resources**  
Jane Margaret Bell

**Planner II, Regional**  
Alexis Baker

**Project Manager I**  
Erin Hughes

**Planner I, Housing Tech**  
VACANT

**Regional Housing Administrator**  
Jane Pies

**Energy & Economic Development Manager**  
Sara Nichols

**Planner II, Regional**  
Ian Baillie

**WestNGN**

**Digital Education Program Coordinator**  
Craig Varley

**Digital Education Program Coordinator**  
Savanah Stone

**Project Manager I**  
Kennedy Young

**Lead Fellow for North Carolina**  
Anna Baechtold

**Lead Fellow for North Carolina**  
Olivia Rosen



**GIS Coordinator**  
Nicole Samu

**Planner II, Regional**  
Jessica Bond

**Project Manager, ECD**  
Brian White

**Community Liaison**  
VACANT

**Community Liaison**  
VACANT

**Community Liaison**  
VACANT

**Community Liaison**  
VACANT

**Community Liaison**  
VACANT

**Transportation Planning**

**FBRMPO Board**

**Transportation Planning Director, FBRMPO**  
Tristan Winkler

**Transportation Planner II**  
Daisy O'Conner

**Transportation Planner I**  
Hannah Bagli

**TDM Coordinator**  
Sandy Broadwill

**Regional Safe Routes to School Coordinator**  
Ada McGovern

**Transportation Administration and Finance Specialist**  
VACANT

**LOSRO Board**

**Assistant Transportation Planning Director, RPO**  
Vicki Eastland

**Transit Grant Administrator**  
Abigail Incze



**MAWD Board**

**MAWD Director**  
Nathan Ramsey

**Assistant Workforce Director / Regional Business Services Leader**  
Barbara Darby

**Business Services Representative - Youth**  
Brandon Priester

**Business Services Representative**  
Mark Sternal

**Workforce Operations Director**  
Melissa Wright

**Workforce Intern**  
Hailey Carroll

**Workforce / AI Intern**  
Riley Edmundson

**Workforce / AI Intern**  
Riley Edmundson

**Workforce / AI Intern**  
Riley Edmundson

**Workforce / AI Intern**  
Riley Edmundson

**Workforce / AI Intern**  
Riley Edmundson

**Workforce / AI Intern**  
Riley Edmundson

**Workforce / AI Intern**  
Riley Edmundson

**Workforce / AI Intern**  
Riley Edmundson

**Workforce / AI Intern**  
Riley Edmundson

**Workforce / AI Intern**  
Riley Edmundson

**Workforce / AI Intern**  
Riley Edmundson

**Workforce / AI Intern**  
Riley Edmundson

**Workforce / AI Intern**  
Riley Edmundson

Finance

**Executive Director of Finance Operations**  
Charlotte Sullivan

**Finance Director**  
VACANT

**Payroll and Finance Coordinator**  
Sherry Christenson

**Accounting Assistant**  
Wanda Clark

**Accounts Payable Clerk**  
Melissa Lindsey

**Accounts Receivable Clerk**  
Kim Ward

**Procurement and Accounting Specialist**  
VACANT



**P-20 Council**

**P-20 Council Executive Director**  
Emily Nicholson

**YouthBuild Project Director**  
Melissa Zenz

**Community Engagement & Data Mgmt Specialist**  
Melissa Zenz

**P20 Administrative Support Specialist**  
Katlen Smith

**Area Agency on Aging Director**  
LeeAnne Tucker

**Senior Companion Program Manager**  
Dee Heinmuller

**SCP Support Specialist**  
Vicki Benavides

**SCP Caregiver Manager**  
Kelly Morgan

**Foster Grandparent Program Manager**  
Stacy Friesland

**Family Caregiver Specialist**  
Edward Jones

**Caregiver Program Associate**  
Carol McLimans

**Project C.A.R.E. Manager**  
Nancy Hogan

**Long Term Care Ombudsman III**  
Cori Search

**Long Term Care Ombudsman I**  
Donna Thomason

**Long Term Care Ombudsman I**  
Donna Case

**Aging Program Specialist, Contracts**  
Zack Schmitt

**Aging Program Specialist, Health Promotion**  
Brea Kuykendall

**Aging Program Specialist**  
Jenna Sharrits

**Aging Program Specialist**  
Kathryn Florack

**MFP Community Inclusion Specialist**  
Carol Allison